

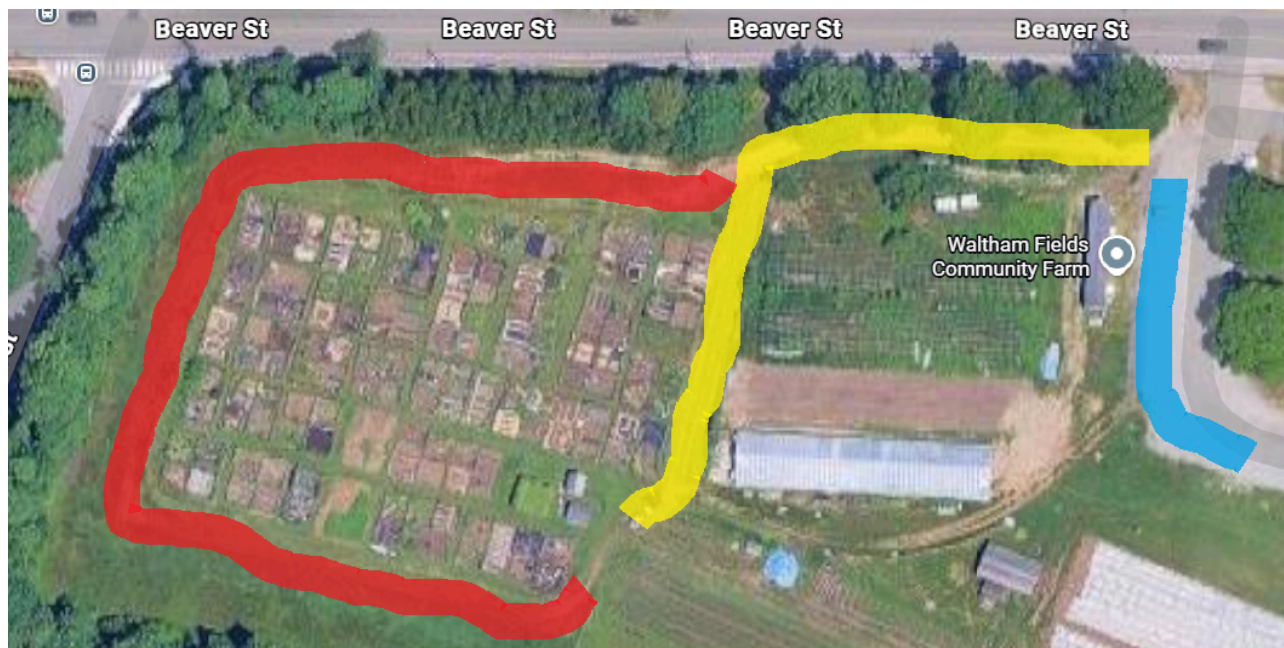
Green Rows of Waltham, GROW, Inc.

2026 Garden Plot Agreement

GROW is entirely volunteer-run. Our garden flourishes only when members allocate time to help maintain the GROW organization and nurture our community. This might mean coming to a workday, joining a team to care for common spaces, helping with events, or sharing your skills. Stay tuned for opportunities throughout the season!

Gardeners commit to these standards:

- This is an all-organic garden. Only organic pesticides, fertilizers, and herbicides may be used.
- Gardens must be actively gardened and maintained throughout the entire growing season.
- You must park your car in the gravel parking lot (indicated in blue) as you enter the property. You may drive heavy loads to the shed and unload them following the yellow route indicated below; but **you must return your car to the parking lot immediately** after you have unloaded. If parking in the lot presents a physical hardship, please request an accessibility parking permit from the GROW board. Please do not drive or park along the route outlined in red unless you have an accessibility parking permit.



- All plots must be weeded and tilled by June 1st. There must be plants visible by June 15.
- Gardeners must weed and maintain their plots regularly and must weed the edges of the aisles adjoining their plots. Plot inspections are performed throughout the season. If you receive three warnings in one season you will not be able to renew your plot*. If you have a problem maintaining your plot please contact a board member to determine a possible solution. *see **plot expectations** section below.
- Composting is permitted only in closed, rodent-proof containers in your plot. If you do not have one available, you will need to bring your garden waste home. The dumpster in the parking lot is **not** for use by GROW gardeners.

- Border plantings: As of 11/1/2026, no plantings outside of the plot will be permitted. At the end of the 2026 growing season, all plants will need to be moved. This will allow for adequate access for mowing, and to allow for medical and other emergencies.
- Berry plots are for BERRY PLANTS and companions only - not for vegetable gardening. Similarly, trees may not be grown in any plot.
- Raspberry or blackberry plants must be vigorously pruned and meticulously maintained. If your berries spread to a neighbor's plot or start appearing in paths, you may be asked to remove the entire plant.
- All structures must be placed within plot boundaries and **must not shade** neighboring plots. Fencing, trellises, and supports may not exceed 6 feet in height. Small banners and flags may be displayed, but may not extend more than 4 feet above the ground.
- Cannabis (marijuana) cultivation is prohibited in the community garden. The Massachusetts law permitting growing your own is meant for private property. Because GROW is in a public area, it is not legal.
- The garden is accessible from dawn until dark. Alcoholic beverages aren't allowed on the property at any time, per City of Waltham regulations.
- At the end of the season, plots are to be cleaned up by Nov. 30th.
- Conserve water. No continuous drip irrigation is allowed. Avoid watering during the heat of day when more water evaporates. When you finish watering, turn off the water at your hose spigot. If the hose or the spigot is leaking please contact the water emergency responders listed at the end of this sheet.
- Be sure to lock the sheds when you are the last to leave the garden.
- Gardeners are responsible for their guests. Children under 14 must be with an adult. Pets must be leashed in accordance with Waltham ordinances.
- Get to know your neighbors. We all share a love of gardening. If a conflict arises, please try and work it out with each other before asking the board for help.
- Greet people you don't know. You may find a new friend—or you may deter pilfering.
- Call 911 to report medical emergencies, fires, or illegal activities. Once you are safe, notify the board.
- GROW community gardens are located on City of Waltham land and are subject to the City's regulations. Gardeners participate at their own risk. The City and GROW are not responsible for crop damage or pilferage from your plot.

EXPECTATIONS FOR YOUR PLOT

We will have plot inspections throughout the season to make sure the garden looks good and everyone's doing their part. Here's what we're looking for:

- **Single plot holders:** Keep at least 60% (135ft² for a 15'x15') of your plot actively growing during the season (May through October). That means planted, mulched, or getting ready to plant. The other 40% can be resting, in cover crop, or between plantings. **Double plot holders:** If you have two plots, we expect 75% (337ft²) of your total space to be actively cultivated. Both plots need to meet this standard. With our waitlist, having extra space is a privilege and we want to make sure it's being well used.

- **Keep the weeds under control:** We get it - perfect weed-free plots are impossible. But please don't let weeds go to seed and spread to your neighbors. Keep aggressive plants like poison ivy, bittersweet, knotweed, bindweed, black swallow-wort, and virginia creeper out completely. Keep fences and plot edges clear so the aisles stay accessible.
- Harvest your produce before it rots and attracts pests. Return shared tools to the sheds when you're done. **At the end of the season:** Remove plant material to reduce disease pressure next season. Inspect and secure structures, store equipment, and materials.

IF YOUR PLOT ISN'T MEETING THESE STANDARDS

The goal is to help you succeed. But if your plot isn't being maintained, here's what happens:

Strike One - We'll send you a note:

- We'll email or mail you a letter explaining what needs improvement.
- You'll have 3 weeks to fix it.
- We're happy to offer advice or resources.
- We'll come back and check on your progress.
- If you fixed it, great! If not, we move to Strike Two.

Strike Two - Let's talk in person:

- We'll meet with you at the garden or somewhere convenient.
- Together we'll write down a plan for getting your plot back on track.
- We'll figure out what's getting in your way and how to solve it.
- We'll set a realistic timeline.
- If you follow through on the plan, excellent! If not, we move to Strike Three.

Strike Three - What happens next:

- If you have a single plot: Three strikes means your plot won't be renewed for the following season. You'll need to clean it out by the end of the current season. (Strikes accumulate across seasons...they don't reset annually.) You can rejoin the waitlist in the future if you want to try again.
- If you have a double plot: Three strikes in one season means you lose your second plot immediately. You may be permitted to keep one (better-maintained) plot. You'll need to clean out the second plot and it will be assigned to a gardener on the waitlist.

Life happens - we get it:

- If you're dealing with a medical emergency, family crisis, or something else major, please talk to us. We can review options. For example: can you find a "plot buddy" to co-manage temporarily? If we can find volunteers to help you temporarily would that be an option?

Think we got it wrong?

- You can appeal to the full board within 2 weeks of getting a Strike Three notice.
- Send a written explanation and we'll review it as a group.
- We'll get back to you with a final decision following the next scheduled board meeting.

Some things = immediate loss of plot:

- Totally abandoning your plot (we tried to contact you twice and heard nothing)
- Growing cannabis
- Threatening anyone, stealing, or vandalizing
- Breaking City rules

Questions? Contact any board member. We're here to help make this work!

gardeners@growcommunitygardens.org is the Gardener's listserv. Email sent to this address is forwarded to all gardeners and is meant to be used for sharing of information. You may unsubscribe from the Gardeners listserve by going to

http://mail.growcommunitygardens.org/mailman/options/gardeners_growcommunitygardens.org, entering your email address, and then hitting the unsubscribe button.

committee@growcommunitygardens.org sends an email to everyone on the board of directors

Board of Directors:

- Kathy: kathyrandel@growcommunitygardens.org, 781-697-4604, President
- Judy: judy@growcommunitygardens.org, 781-475-6618, Vice President
- Scott: sshurr@growcommunitygardens.org, 781-249-5494, Clerk
- Russell: russell@growcommunitygardens.org, 704-907-4708, Treasurer
- Alessandro: amagli@growcommunitygardens.org
- Nick: nick@growcommunitygardens.org
- Carrie: carriefraga@growcommunitygardens.org

Water Emergencies – contact: Randy: randyhoudini@yahoo.com, 617-719-5572 or Kathy: kathyrandel@growcommunitygardens.org, 781-697-4604